



HG-921 USER MANUAL

HYGGER SMART PTC HEATER



Hygger smart PTC heater is a perfect aquarium heater for bigger freshwater aquariums.



**Please do not place the smart PTC heater in saltwater and other corrosive water, also do not pour any chemical agent to the aquarium which is equipped with the smart PTC heater **

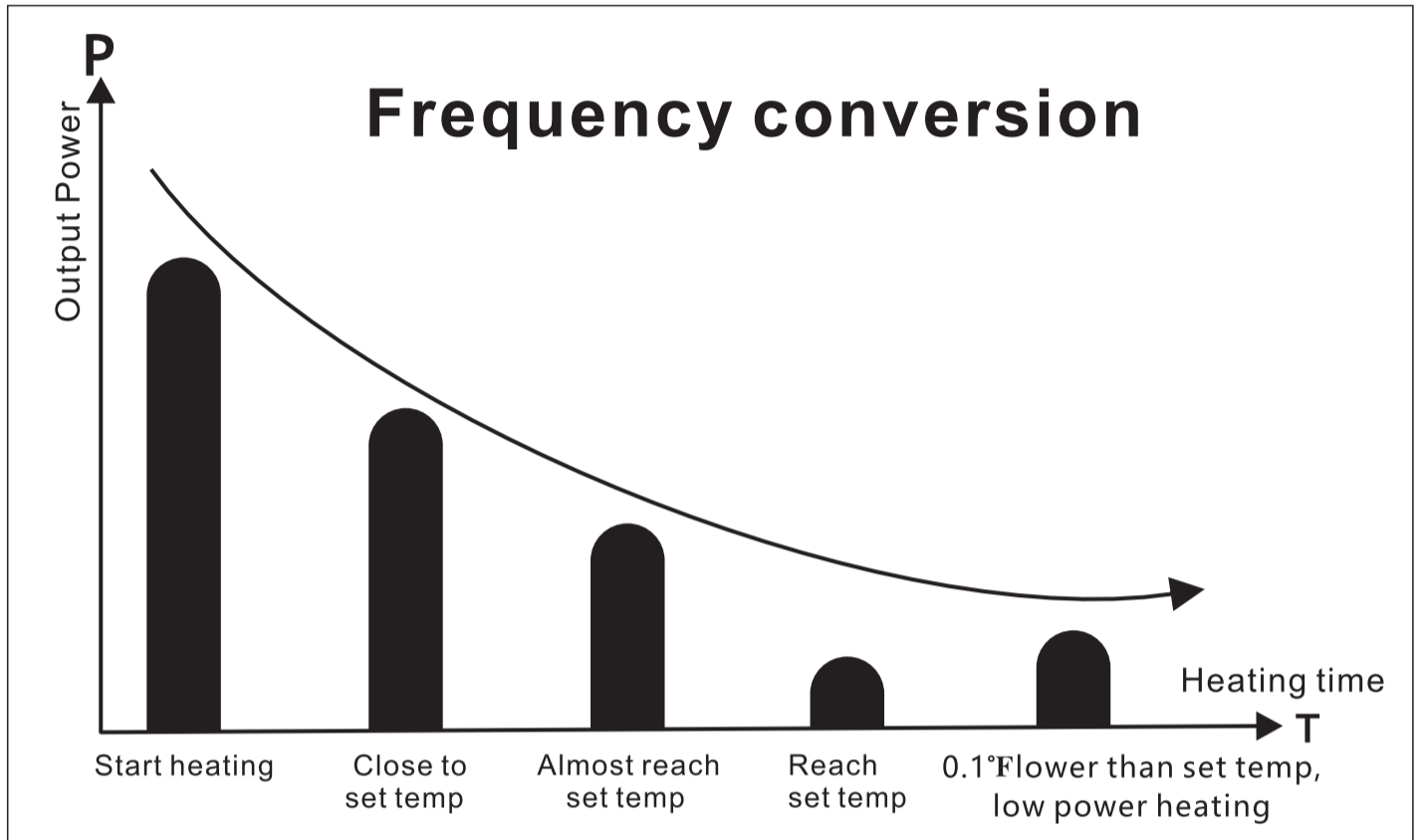
1. PRODUCT FEATURES

Rapid heating rate: The heating rod is made of semiconductor ceramic material, heating water fast.

Dual relay design: One heater with two relay is like two hearts for one person. It is more safe for the aquariums.

LED digital temperature display: Multi-function LED digital display shows the water temperature clearly and accurately.

External temperature controller: Easy to set the desired temperature you want.



Safety control protects against over heating: When the water temp pass 97°F accidentally, the heater will stop heating automatically. When the water temp less than 93°F, the heater will start working automatically.

Shut of automatically when water level dips too low: When the heating rod is exposed to air, the heater will shut off automatically. When the heating rod is completely immersed in water, it will start working automatically.

Accurate and extended duration: Made of premium material and with scientific design.

Memory function: After shutting of, the heater will keep the last setting once power on again.

Equipped with ABS protective sleeve: Prevents small fish from harmed.

Suitable for freshwater only.

2.PRODUCT PARAMETERS

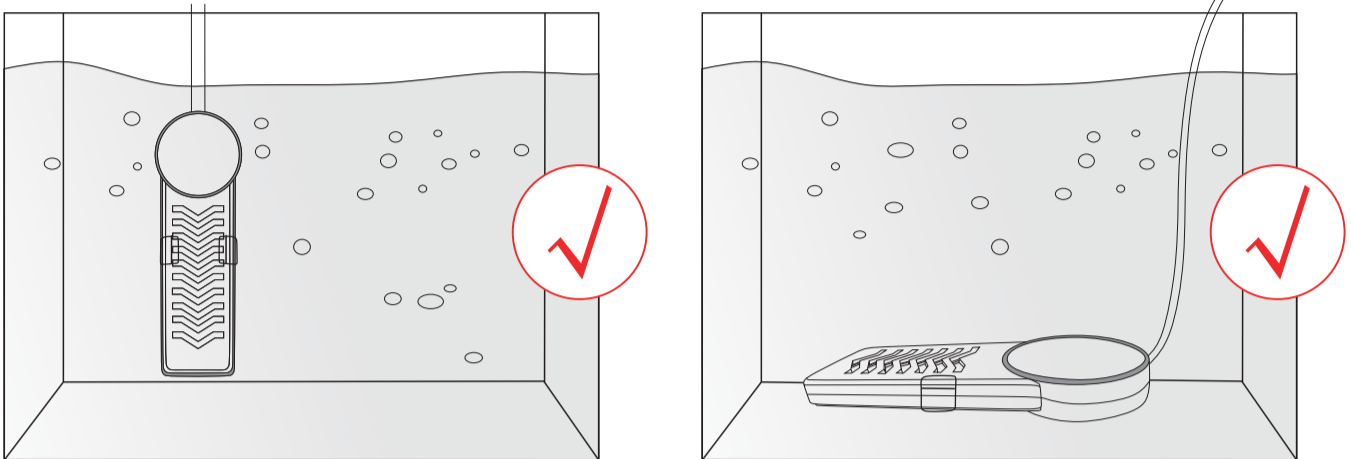
Model No:	HG-921	
Power	500W	800W
Cord length	5ft+5ft	5ft+5ft
Voltage	110-120V/60Hz	
Application	60-120Gal	120-180Gal
Temp Accuracy	±0.1°F	±0.1°F
Control Range	70°F~94°F	70°F~94°F
Heating Rod Dimension	8×3.1×0.9 inch	9.3×3.1×0.9 inch
Temp Controller Dimension	5.7×3.6×0.9 inch	5.7×3.6×0.9 inch

3. PACKAGE INCLUDED

- 1× Smart PTC heating rod with sleeve, suction cups and IC temp controller
- 1× User manual





4. APPLICATION

A. Place the heater as following diagram:



B. Plug to power and gently touch the “SET” button on the IC temperature controller and you will see the digital temperature flashing three times on the display of heater. Press the “ \ominus ” or “ \oplus ” button until reach your desired temperature value. The display will flash the desired temperature value three times, then return displaying the current water temperature. Your setting is done. You can press the “ \ominus ” or “ \oplus ” button [persistently to display 70~94°F in a cycle.](#)

C. Digital display models

- ①  Working: The heater is heating water.
- ②  Malfunction: The heater will show fault code as troubleshoot.
- ③  Thermostatic: The water temp reached the desired value.
- ④  Out of water: The heating rod is out of water and show fault code “ER”, the heater will stop heating.

5. TROUBLESHOOT

Fault Code	Explanation	Solutions
ER	Heating rod is exposed to air.	Place the heating rod submersible fully in water.
EE	The water temp is higher than 97°F.	Cool the water and make it to normal temp.
H1	Temp sensor one is short-circuit protection.	Discard the heater
H2	Temp sensor two is short-circuit protection.	Discard the heater
E1	Temp sensor one is open-circuit fault.	Discard the heater
E2	Temp sensor two is open-circuit fault.	Discard the heater
E3	The relay is melted.	Discard the heater

6. WARNING: To guard against injury, basic safety precautions should be observed including the following:

1. Read and follow this user manual strictly.

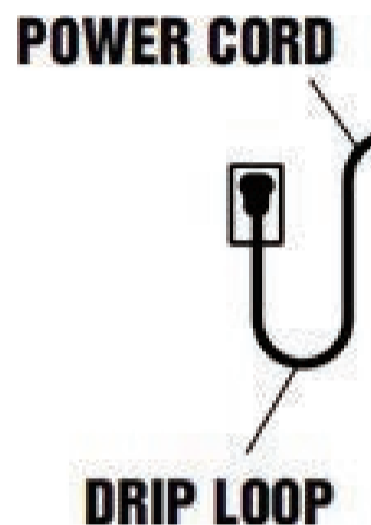
2. **DANGER**-To avoid possible electric shock, special care should be taken since water is employed in the use of aquarium equipment. For each of the following situations, do not attempt to repair yourself; return the heater to an authorized service facility for service or discard the heater.

A. If the heater shows any sign of abnormal working, unplug the power and remove the heater from water 15 minutes later.

B. Carefully examine the heater after installation. It should not be plugged in if there is water on parts not intended to be wet.

C. Do not operate the heater if it has a damaged cord or plug, if it is malfunctioning or if it is dropped or damaged in any manner. The power cord of this heater cannot be replaced, if the cord is damaged, the heater should be discarded.

D. To avoid the possibility of the heater plug getting wet, position aquarium stand and tank to one side of a wall mounted receptacle to prevent water from dripping onto the receptacle or plug. A “drip loop”, shown in the figure below, should be arranged by the user for each cord connecting the heater to the receptacle. The “drip loop” is the part of the cord below the level of the receptacle, or the connector. If an extension cord is used, to prevent water traveling along the cord and coming in contact with the receptacle. If the plug or receptacle does get wet, DO



NOT unplug the cord. Disconnect the fuse to the circuit breaker that supplies power to the heater. Then unplug and examine for the presence of water in the receptacle.

3. Close supervision is necessary when the heater is used near children. Daily supervision is necessary when the heater.

4. This heater is not allowed to use by persons (including children) with reduced physical, sensory or mental capabilities, or lack of experience and knowledge, unless they have been given supervision or instruction concerning use of the heater by a person responsible for their safety

5. To avoid injury, do not contact moving parts or hot parts and so on.

6. Always unplug the heater from the outlet when not in use, before putting on or taking off parts, and before maintenance or placing hands in the water. Never yank the cord to pull plug from outlet. Grasp the plug and pull to disconnect.

7. Do not use the heater for other than intended use. The use of attachments not recommended or sold by the appliance manufacturer may cause an unsafe condition.

8. Do not install or store the heater where it will be exposed to the weather or to temperatures below freezing.

9. Only use in freshwater, do not use the heater in other liquids.

10. Make sure the heater is securely installed before operating it.

11. Read and observe all the important notices on the heater.

12. If an extension cord is necessary, a cord with a proper rating should be used. A cord rated for less amperes or watts than the heater rating may overheat. Care should be taken to arrange the cord so that it will not be tripped over or pulled.

13. The 2 conductor power cord has a polarized plug (one blade is wider than the other). As a safety feature, this plug will fit in a polarized outlet only one way. If the plug does not fit fully in the outlet, reverse the plug. If it still does not fit, contact a

qualified electrician. Never use with an extension cord unless plug can be fully inserted. Do not attempt to defeat this safety feature.

14.The heater is intended FOR HOUSEHOLD USE ONLY.

15.SAVE THIS USER MANUAL.

7.ATTENTIONS:

- ✓ Please check all the items to inspect condition when unboxing the package.
- ✓ Please read the instructions carefully. Use and follow the instructions strictly.
- ✓ Please choose the suitable size for aquarium.
- ✓ Please place the heating rod in the way of water flow and don't bury it.
- ✓ Please place the heating rod submersible fully when it's on duty, unplug the heater and wait for 15 minutes before changing water or remove the heater.
- ✓ Please mind that the heater can be turned off automatically when exposed to air, but it is the last resort.
- ✓ After use of the heater, calcium carbonate contained in algae and breeding water such as moss may clump and adhere to the heating rod. If dirt adheres to the heating rod, use a sponge or cloth and water to wipe it out early. Do not use alcohol or other medicines as this may damage the heater or damage the health of the breeding fish. When used for a long time with the dirt attached, please be aware that it may cause failure due to the inability to control the temperature correctly.

8.DISPOSAL

Do not dispose this product as unsorted municipal waste. Collection of such waste separately for special treatment is necessary. This product must not be disposed together with the domestic waste. This product has to be disposed at an authorized place for recycling of electrical and electronic appliances. By collecting and recycling waste, you help save natural resources, and make sure the product is disposed in an environmental friendly and healthy way.



9. CONTACT INFORMATION

E-mail: service@hygger-online.com

Website: www.hygger-online.com

Thank you for choosing Hygger, making aquarium keeping easier one product at a time.

If you have any problems or suggestions for the smart PTC heater, please contact us by email before leaving feedback or opening a case, it will be the fastest way to solve your problem.

If you are satisfied with the smart PTC heater, please leave positive feedback for our product, in order to let more customers enjoy it. Thanks again!